



238 Pillow Street
Butler, PA 16001
724-283-4681
724-283-5939 (fax)
www.bwieagle.com

PRODUCT INFORMATION BULLETIN

EAGLE 2 Dual Channel Position Controller MODEL 11-6000

DESCRIPTION

The Eagle 2 Dual Channel Position Controller detects the presence of any metal target in front of its two-wire proximity sensor and produces a continuous relay output until the target has moved away. This model is equipped with two independent sensors and relay outputs to allow ease of interfacing for applications such as high/low bin level indication or left/right position detection. The rugged NEMA enclosure and encapsulated sensors meet virtually any industrial environmental challenge.

INSTALLATION

DISCONNECT AC Power before proceeding with instructions.

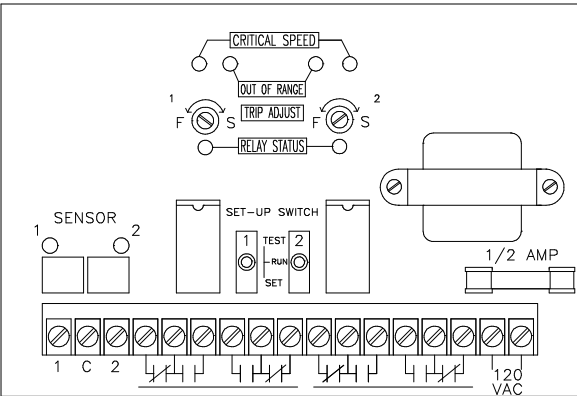
1. Mount the EAGLE 2 control unit in a convenient location.
2. Make the following connections:
 - A. Connect power cable to 120VAC.
 - B. Connect control cables to proper terminals in your control circuit.
 - C. Connect EAGLE MODEL 10-7439 PROX SENSOR cables to the sensor connectors on the control unit.
3. Install sensors at desired location. See sensor installation section.

SET-UP AND TESTING

1. Turn TRIP ADJUST pot counterclockwise until it stops. (approximately 7 o'clock).
2. Place a metal target in front of the prox sensor. This will cause the SENSOR LED on both the sensor and the control unit to illuminate continuously.
3. The control relay will now energize within approximately 1/2 second.
4. Remove the metal target from in front of the sensor. The SENSOR LEDs will now extinguish, and the control relay will de-energize within approximately 1/2 second.
5. If additional **Off-Delay** is desired, continue to turn TRIP ADJUST pot clockwise to a maximum delay setting of 10 seconds.
6. Repeat steps 1 thru 5 for the second sensor adjustment.



CONTROLS AND INDICATORS



SPECIFICATIONS

AC Input	120 VAC 15 W
Fuse Protected	1 amp
Operating Temperature	-40°C to +60°C (-40° to +140°F)
Off Delay	Adjustable to a maximum of 10 seconds
Relay Contacts	DP/DT 8 amp @ 120 VAC
Response Time	Approximately 1/2 second
Housing	NEMA 12 Standard

REPLACEMENT AND OPTIONAL PARTS

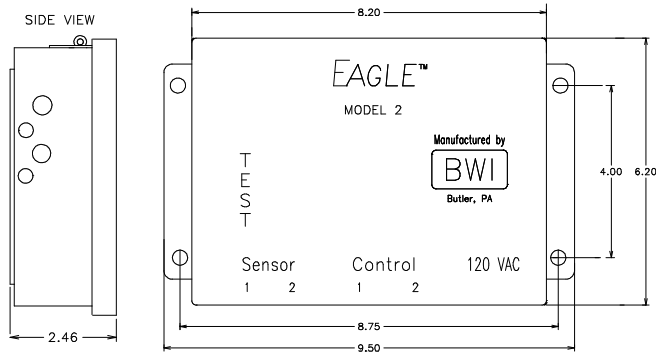
P.C. Board	11-6002
2-Wire Proximity Sensor, Threaded Barrel	10-7439
Relay	99-REL-0001
Strain Relief (Power Input)	99-CON-0011
Strain Relief (Control)	99-CON-0012

EAGLE 2

Dual Channel Position Controller

MODEL 11-6000

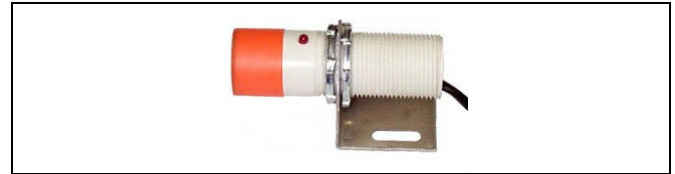
DIMENSIONS



PROX SENSOR

Inductive Proximity Type

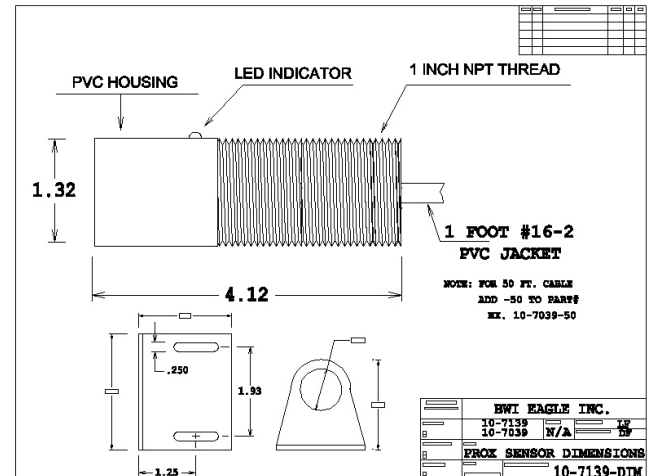
MODEL 10-7439



INSTALLATION

1. Select a location for the sensor where the target will be able to pass in front of the sensing face.
2. Mount sensor firmly with hose clamps or U-bolts to prevent it from moving or working loose. Tape is **NOT** recommended as a fastener.
3. Before tightening, and with the target in front of the sensor, check to be sure that the LED has illuminated continuously. Effective distance between the sensor and target is approximately 1/8 to 1/4 inch.

DIMENSIONS



SPECIFICATIONS

Dimensions	4.12 in. x 1.32 in. O.D.
Sensor Type	Inductive Proximity (Metal)
Sensor Power Requirement	Current Limited 12VDC from Control Unit
Unit Sensor Cable	Twisted Pair 16/2 - 75 Ft. w/Connector
Distance	Sensor to Control Unit - 1 Mile

DOCUMENT DATE: 14-Sep-04



238 Pillow Street
Butler, PA 16001
(724) 283-4681
Fax (724) 283-5939
www.bwieagle.com