



105 Bonnie Drive
Butler, PA 16002
724-283-4681
724-283-5939 (fax)
www.bwieagle.com

PRODUCT INFORMATION BULLETIN

TAC-SWITCH Critical Speed Switch MODEL 22-8000ALS-6-ISWP

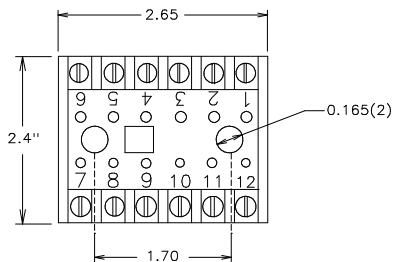
DESCRIPTION

The model 22-8000ALS-6-ISWP incorporates a modified Tac Switch and an I.S. Zener Barrier in an explosion proof enclosure for installation in hazardous locations. This configuration allows for hazardous area testing as well as speed calibration. This unit monitors speed ranges of 6- 60 RPMs.

INSTALLATION

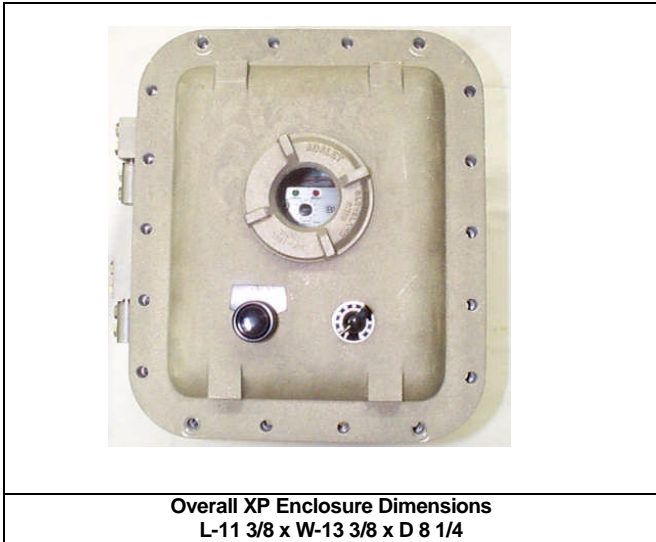
Disconnect AC power before proceeding with installation

1. Install the explosion proof unit in a convenient location.
2. Connect an Eagle I.S. Sensor to Zener Barrier. See I.S. Sensor installation sheet.
3. Connect relay output terminals to your control circuit.

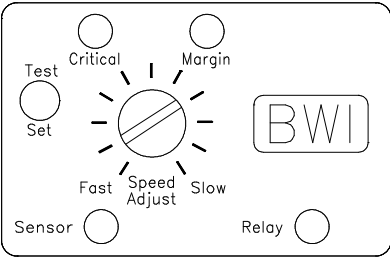


TERMINAL	CONNECTION
1	Zener Barrier - Common (-)
2	Zener Barrier - Positive (+)
3	No Connection
4	Earth Ground
5 - 6	120 VAC
7	Remote POT
8	Remote POT
9	Remote POT
*10	Relay - N/C
*11	Relay - Common
*12	Relay - N/O

*Note - These relay contacts have been pre-wired to a remote terminal strip for easy access.



CONTROLS AND INDICATORS



SET UP AND TESTING

Final calibration should be performed with the belt loaded and running at normal speed.

1. Turn SPEED control CCW until it stops (approximately 7 o'clock)
2. Hold switch in set position to energize relay.
3. Turn SPEED control CW slowly until CRITICAL SPEED LED stays on continuously.
4. Continue turning SPEED control until MARGIN LED stays on continuously.
5. Turn SPEED control CCW until MARGIN LED begins to blink at the same rate as SENSOR PULSE LED. The CRITICAL SPEED LED **must** stay on continuously.
6. After RELAY STATUS LED is illuminated, return switch to RUN position (center)
7. A momentary TEST position is provided to simulate the loss of sensor signal which releases the control relay

TAC-SWITCH

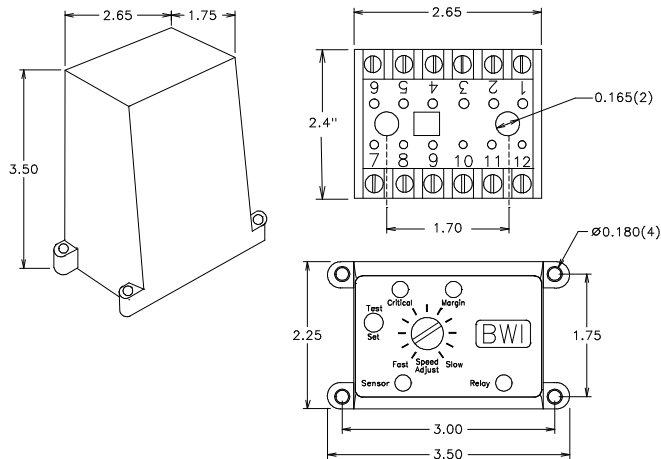
Critical Speed Switch

MODEL 22-8000ALS-6-ISWP

SPECIFICATIONS

AC Input	120VAC 8W
Fuse Protected	1 amp
Speed Range	6 - 60 RPM
Relay Contacts	SPDT 5 amp @ 120VAC
Safety Delay	1 Second
Response Time	1 Second or Less
Tac Switch Enclosure	ABS Plastic
XP Enclosure	NEMA 7, NEMA 9

DIMENSIONS



REPLACEMENT AND OPTIONAL PARTS

Control Module	22-8002ALS-6-ISWP
Mounting Socket	22-8003
I.S. Threaded PVC Proximity Sensor	10-7039
I.S. Zener Barrier	10-7071

TYPICAL BELT STARTER

TYPICAL BELT STARTER
22-8000 INSTALLATION

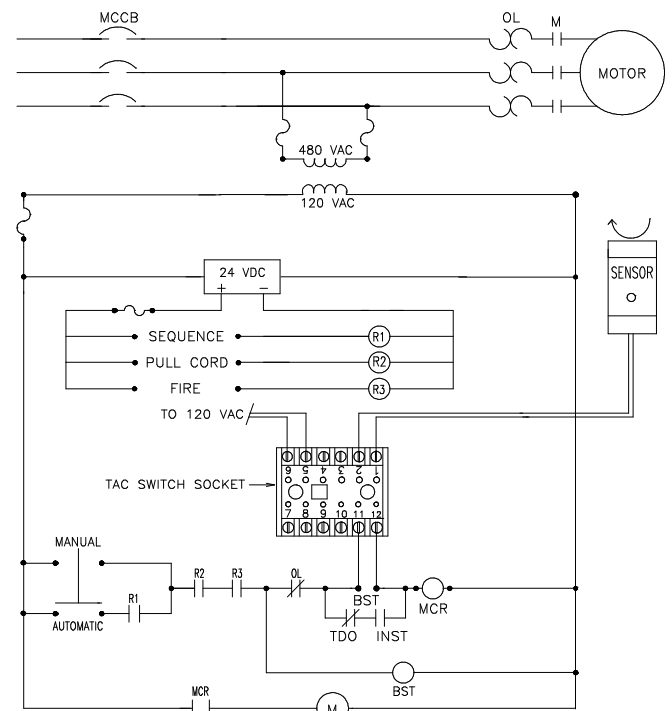


FIGURE 1

DOCUMENT DATE: 19-Jul-10



238 Pillow Street
Butler, PA 16001
(724) 283-4681
Fax (724) 283-5939
www.bwieagle.com