



105 Bonnie Drive
Butler, PA 16002
724-283-4681
724-283-5939 (fax)
www.bwieagle.com

PRODUCT INFORMATION BULLETIN

AIR-EAGLE® SR PLUS 2.4 GHz RF Transmitter MODEL 36-1400-4B-DC

DESCRIPTION

The AIR-EAGLE SR PLUS, MODEL 36-1400-4B is an R.F. transmitter capable of sending up to four digital button commands to the Air-Eagle SR Receiver, model 38-2000 or 38-8000 from up to 1200 feet away. This unit is user-programmable for up to 128 digital addresses and eight network frequencies to allow multiple transmitters and receivers to operate simultaneously in the same area without interference.

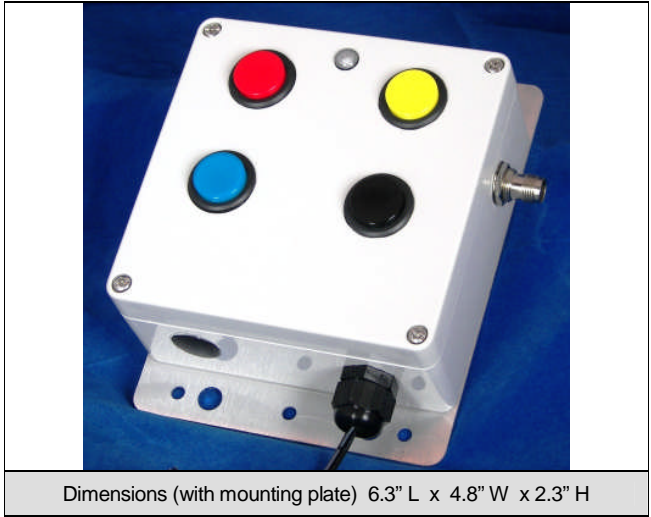
INSTALLATION

1. Mount the AIR-EAGLE SR PLUS TRANSMITTER in a convenient location where the operator will have easy access to all buttons.
2. Install antenna. The unit has an antenna connector located on the right side on the enclosure. Attach the supplied portable antenna to this connector.
3. Connect DC power and control to the proper terminals in your control circuit.

DIGITAL ADDRESS & FREQUENCY SET-UP

This transmitter is factory programmed to Frequency #1 and Digital Address "0". These settings can be changed by the user in any combination **but must match the receiver that is set up to communicate with this transmitter.** **If using this transmitter with a model 38-2000 4-relay receiver, the digital address must be kept at the default of Digital Address "0".**

<ol style="list-style-type: none"> 1) Remove power from unit 2) Remove top cover. 3) Select desired address and/or network frequency using table below. 4) Reattach cover and apply power. 5) Programming is now complete. 				
SEL1 (ADDRESS)	Seven dip switches for selecting digital address of this transmitter (Maximum of 128 combinations)			
SEL 2 (SW 1-3): (NETWORK FREQUENCY)	Network Address	SW1	SW2	SW3
	1	OPEN	OPEN	OPEN
	2	CLOSED	OPEN	OPEN
	3	OPEN	CLOSED	OPEN
	4	CLOSED	CLOSED	OPEN
	5	OPEN	OPEN	CLOSED
	6	CLOSED	OPEN	CLOSED
	7	OPEN	CLOSED	CLOSED
8	CLOSED	CLOSED	CLOSED	
SEL2 (SW4)	Reserved for future use			

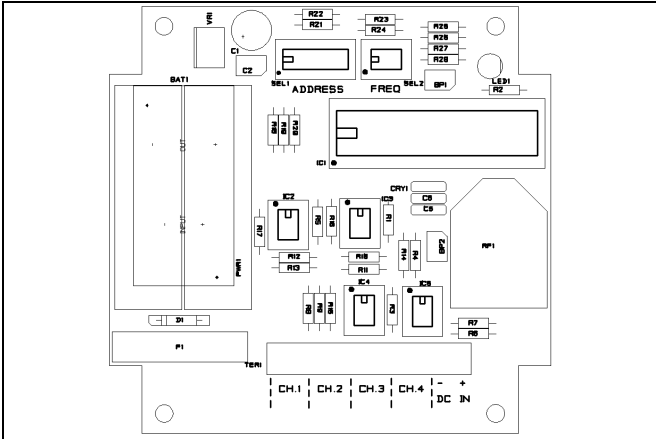


Dimensions (with mounting plate) 6.3" L x 4.8" W x 2.3" H

TERMINAL STRIP WIRING

Wire as shown based on number of included pushbuttons									
1	2	3	4	5	6	7	8	9	10
Button 1 Common	Button 1 Input	Button 2 Common	Button 2 Input	Button 3 Common	Button 3 Input	Button 4 Common	Button 4 Input	(-) 9-36VDC input	(+) 9-36VDC input

CONTROLS & INDICATORS



TX LED	Illuminates continuously while any button is depressed and unit is transmitting.
Pushbuttons 1 thru 4	Transmits individual button RF codes to the receiver

AIR-EAGLE® SR PLUS

2.4 GHz RF Transmitter

MODEL 36-1400-4B-DC

APPROVALS

United States (FCC)	OUR-XBEEPRO
Canada (IC)	4214A-XBEEPRO
Europe (CE)	ETSI

SPECIFICATIONS

DC Input	9 - 36 VDC @ 10 Watts
Four Dry Contact Inputs	Pre-wired to included pushbuttons
Enclosure	ABS Plastic NEMA 3, 3R, 4, 12 + 13
Transmit Frequency	2.4GHz Spread Spectrum
Transmitter Coding	128 Digital Addresses (Available only when communicating with model 38-8000)
Transmitter Channels	8 Independent Network Frequencies
Antenna Connection	TNC Female
RF Output Power	60 mW
Transmit Range	Approximately 1200 Feet
Operating Temperature	-40° F to +185° F

REPLACEMENT PARTS & ACCESSORIES

PC Board (Main)	36-1402-4B-DC
Standard Antenna (Included):	
2.4GHz TNC Portable Antenna (For distances up to 1200 feet*)	49-1201
Optional Antennas and Accessories – Used to increase range in both non line of sight and line of sight applications. - Contact BWI Eagle for recommendations	
2.4GHz Thru-Hole Mount Mobile Antenna	49-2201
2.4GHz Magnetic Mount Mobile Antenna	49-2202
2.4GHz Omni Directional Antenna	49-3201
2.4GHz 13dB Yagi Antenna	49-3202
Flex Coax Cable w/Connectors – Connects external antenna(s) to base unit(s).	49-4000-XX (XX = # of Feet)
Inline Lightning Arrestor	49-5002
* = Line of Sight	

LIMITED WARRANTY STATEMENT

BWI Eagle Inc. warrants the Air-Eagle Remote Control System, if properly used and installed, will be free from defects in material and workmanship for a period of 1 year after date of purchase. Said warranty to include the repair or replacement of defective equipment. This warranty does not cover damage due to external causes, including accident, problems with electrical power, usage not in accordance with product instructions, misuse, neglect, alteration, repair, improper installation, or improper testing. This limited warranty, and any implied warranties that may exist under state law, apply only to the original purchaser of the equipment, and last only for as long as such purchaser continues to own the equipment. This warranty replaces all other warranties, express or implied including, but not limited to, the implied warranties or merchantability and fitness for a particular purpose. BWI Eagle makes no express warranties beyond those stated here. BWI disclaims without limitation, implied warranties of merchantability and fitness for a particular purpose. Some jurisdictions do not allow the exclusion of implied warranties so this limitation may not apply to you. To obtain warranty service, contact BWI Eagle for a return material authorization. When returning equipment to BWI Eagle, the customer assumes the risk of damage or loss during shipping and is responsible for the shipping costs incurred.

DOCUMENT DATE: 31-Aug-10 / REV.4



105 Bonnie Drive
Butler, PA 16002
(724) 283-4681
Fax (724) 283-5939
www.bwieagle.com