



105 Bonnie Drive
Butler, PA 16002
724-283-4681
724-283-5939 (fax)
www.bwieagle.com

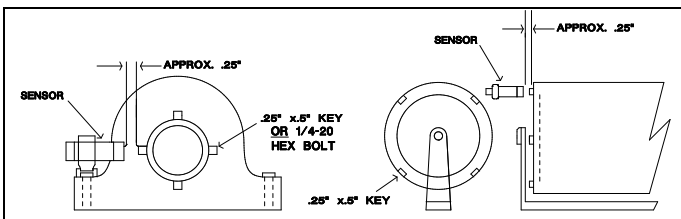
PRODUCT INFORMATION BULLETIN

PROX SENSOR Inductive Proximity Type MODEL 10-7140

INSTALLATION

1. Select the roller or shaft to be monitored. If a roller is to be monitored, be sure it is always contacting the belt.
2. Affix a target on the roller or shaft. The target should be a piece of key-stock, 1/4-20 Hex Nut, etc. (Figure 1) **NOTE:** The use of a notch or a dent is not an acceptable target for the prox sensor. This sensor must see the presence of a target, not an absence of a target as there would be with a notch or dent.
3. Mount sensor firmly with hose clamps or U-bolts to prevent it from moving or working loose. Tape is **NOT** recommended as a fastener.
4. Before tightening, check that the target passes through the center area of the sensor face. This will produce the greatest sensitivity and sensing distance. With the roller or shaft spinning, move the sensor toward the target. The LED on the sensor should blink in direct proportion to the speed of the shaft or roller. Effective distance between the sensor and target is approximately .1 inch to .5 inch depending on the size of the target.

FIGURE 1

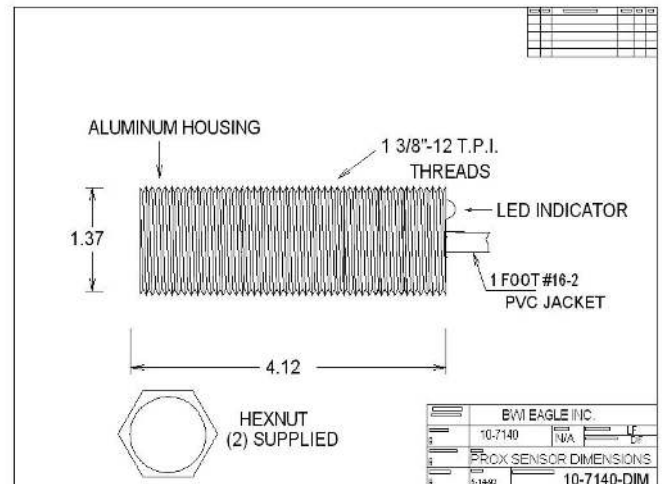


Note: When mounting sensor on small idler rollers (less than 6 inches in diameter), install a maximum of 2 targets.

SPECIFICATIONS

| 10-7140 SPECIFICATIONS | |
|--------------------------|---|
| Dimensions | 4.12 in. x 1.37 in. O.D. |
| Sensor Type | Inductive Proximity (Metal) |
| Housing | 1 3/8" 12 T.P.I. Threaded Aluminum |
| Sensor Power Requirement | Current Limited 12VDC from Control Unit |
| Unit Sensor Cable | Unshielded ** Twisted Pair 16/2 - 3 Ft. Pigtail |
| Distance | Sensor to Control Unit - 2 Miles |
| Minimum Sensing Speed | Less than 1 RPM |

****NOTE** - Shielded cable is recommended for all above ground applications. The shield of the cable should be attached to earth ground within 2 feet of the sensor head. In severe noise environments, grounding the shield at the control module also, will eliminate any E.M.I. interference.



DOCUMENT DATE: 2-May-02



105 Bonnie Drive
Butler, PA 16002
(724) 283-4681
Fax (724) 283-5939
www.bwieagle.com