

# BWI EAGLE TAC-SWITCH

## 221-8000-AC

## 221-8000-DC

### Digital Speed Switch



Document Date: 8/29/2024

Product Rev: 10

PIB No: 221-8000



[cattron.com/products/bwi-eagle](http://cattron.com/products/bwi-eagle)



655 N River Rd NW, Suite A  
Warren, OH 44483

724-283-4681  
[sales.bwieagle@cattron.com](mailto:sales.bwieagle@cattron.com)

## WARRANTY STATEMENT

BWI Eagle Inc. warrants the Air-Eagle Remote Control System, if properly used and installed, will be free from defects in material and workmanship for a period of **1 year** after date of purchase. Said warranty to include the repair or replacement of defective equipment. This warranty does not cover damage due to external causes, including accident, problems with electrical power, usage not in accordance with product instructions, misuse, neglect, alteration, repair, improper installation, or improper testing. This limited warranty, and any implied warranties that may exist under state law, apply only to the original purchaser of the equipment, and last only for as long as such purchaser continues to own the equipment. This warranty replaces all other warranties, express or implied including, but not limited to, the implied warranties or merchantability and fitness for a particular purpose. BWI Eagle makes no express warranties beyond those stated here. BWI disclaims without limitation, implied warranties of merchantability and fitness for a particular purpose. Some jurisdictions do not allow the exclusion of implied warranties so this limitation may not apply to you. To obtain warranty service, contact BWI Eagle for a return material authorization. When returning equipment to BWI Eagle, the customer assumes the risk of damage or loss during shipping and is responsible for the shipping costs incurred.

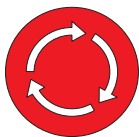
## SIGNAL RANGE

Max range statements are estimates based on a clear line of sight with few interferences. Actual range will vary based on transmitting power, orientation of transmitter and receiver, height of transmitting and receiving antennas, weather conditions, electronic interference, terrain, and physical obstacles, including but not limited to; walls, building structures, trees (foliage), metal objects, and landscape (hills, mountains).



## WIRELESS STOP, ASTOP, and E-STOP SYSTEMS

Wireless E-STOP systems should never be considered a primary life-saving device. At least one hard-wired switch must be available in the event the wireless system is not operational. Failure to comply may result in serious injury or death to personnel and damage to equipment.



Wireless STOP and ASTOP transmitters are not failsafe emergency stop controls. They are NOT to be used as a life-saving device. They are designed for wireless control of equipment or vehicle remote operation. Failure to use as intended may result in serious injury or death to personnel and damage to equipment.



SCAN ME



## INTRODUCTION

The BWI Eagle Tac-Switch monitors speed and detects motion in machinery in a variety of industrial applications.

The model 221-8000 monitors speed ranges of 6-3000 RPMs and includes a user-programmable 0-30 second ramp-up timer. The Tac-Switch utilizes a non-contacting proximity sensor that can be remotely located up to two miles from the control unit.

Enclosed in a durable DIN-rail mountable polycarbonate enclosure, the control unit conveniently mounts inside an electrical panel or O.E.M. control box. The up-front digital display shows the current RPM in real time, eliminating setting "guesswork" by constantly showing the actual RPM of the apparatus being monitored.

The Tac-Switch is ideal for conveyors, crushers, fans, motors, and other rotating equipment.

## INSTALLATION

1. Mount the Tac-Switch inside an existing control panel or other suitable enclosure.
2. Install wiring to the terminal strip. (See TERMINAL STRIP WIRING section.)
3. Install BWI Eagle Proximity Sensor at roller or shaft. (See sensor installation sheet).

## APPROVALS

PA BOTE Approval	1207-90
------------------	---------

## TERMINAL STRIP WIRING

Terminal	221-8000-AC	221-8000-DC
Terminal 1	Sensor Input Common (-)	Sensor Input Common (-)
Terminal 2	Sensor Input (+)	Sensor Input (+)
Terminal 3	Not used on this model.	
Terminal 4		
Terminal 5		
Terminal 6		
Terminal 7		
Terminal 8		
Terminal 9	N/C (2)	N/C (2)
Terminal 10	Common (2)	Common (2)
Terminal 11	N/O (2)	N/O (2)
Terminal 12	N/C (1)	N/C (1)
Terminal 13	Common (1)	Common (1)
Terminal 14	N/O (1)	N/O (1)
Terminal 15	100-250 VAC	(-) 9-36 VDC
Terminal 16	100-250 VAC	(+) 9-36 VDC

Note: Wire to terminals 10 and 11 if driving a relay. Wire to terminals 13 and 14 if driving a PLC input.

## TRIP POINT SET-UP

Apply power to the Tac Switch. The factory default settings are as follows: the trip point is 60 RPM or PPM, the built-in ramp-up timer is disabled, and the relay is off. (TRIP: 0060 / RAMP: 0 / REL: OFF).

Read instructions completely before beginning set-up procedure.

1. Press the SEL button to highlight TRIP.
2. Press the SET button to begin Trip Speed set-up. The trip speed is displayed as 4-digit number. The 1000s digit will be highlighted. Use the SEL button to change the number. Press the SET button to move to the 100s digit. Use the SEL button to change the number. Press the SET button to move to the 10s digit. Continue until all digits are set.
3. Review setting for accuracy. To adjust a digit, press the SET button to move through the digits. Use the SEL button to adjust the digits.
4. When digits are entered correctly press and hold the SET button until all digits of the RPM setting highlight (approximately 2 seconds). Release the SET button.

The RPM setting will be maintained in memory until changed again by the operator.

## RAMP-UP TIMER SET-UP

Apply power to the Tac Switch. The factory default settings are as follows: the trip point is 60 RPM or PPM, the built-in ramp-up timer is disabled, and the relay is off. (TRIP: 0060 / RAMP: 0 / REL: OFF).

Read instructions completely before beginning set-up procedure.

1. Press the SEL button to highlight RAMP.
2. Press the SET button to highlight the timer in seconds.
3. Use the SEL button to increment the timer from 0 to 30 seconds. Holding the SEL button for more than 1 second will auto increment the timer until the button is released.
4. When selection is displayed correctly press and release the SET button. RAMP will be highlighted.

The Ramp-Up Timer setting will be maintained in memory until changed again by the operator.

## TEST PROCEDURE

A test function has been provided to allow the operator to de-energize the internal control relay and stop the monitored equipment.

Read instructions completely before beginning test procedure.

1. Press the SEL button to highlight TEST.
2. Press and hold the SET button for approximately 3 seconds. The control relay will de-energize.
3. Release the SET button. A safety delay will keep the control relay OFF for 5 seconds. The relay will automatically re-energize after the delay if the RPM speed above the programmed trip point is detected.

## SCREEN RESET

In the event the screen freezes, a screen reset function is available.

1. Press and hold the SEL button.
2. Press the SET button.
3. Release both buttons. The screen will reset to the default display.

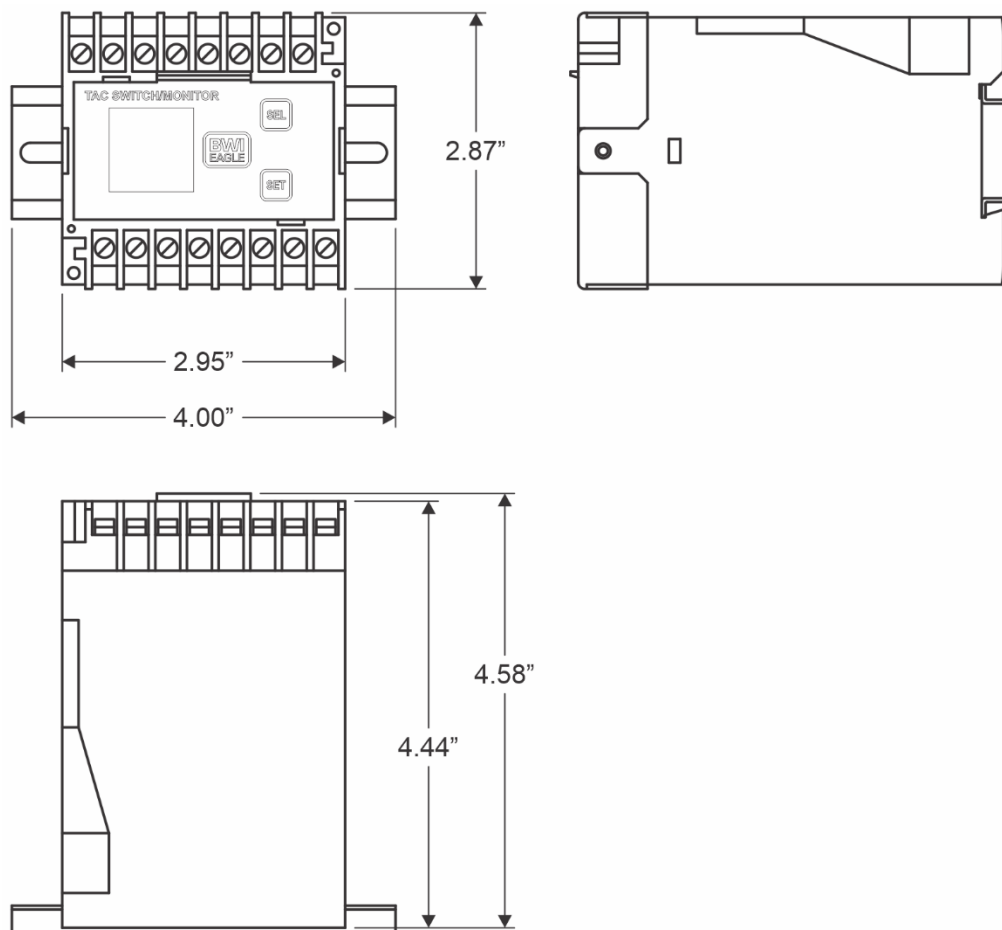
## ACCESSORIES

Threaded PVC Proximity Sensor	10-7139
I.S. Threaded PVC Proximity Sensor	10-7039
I.S. Zener Barrier	10-7072

## SPECIFICATIONS

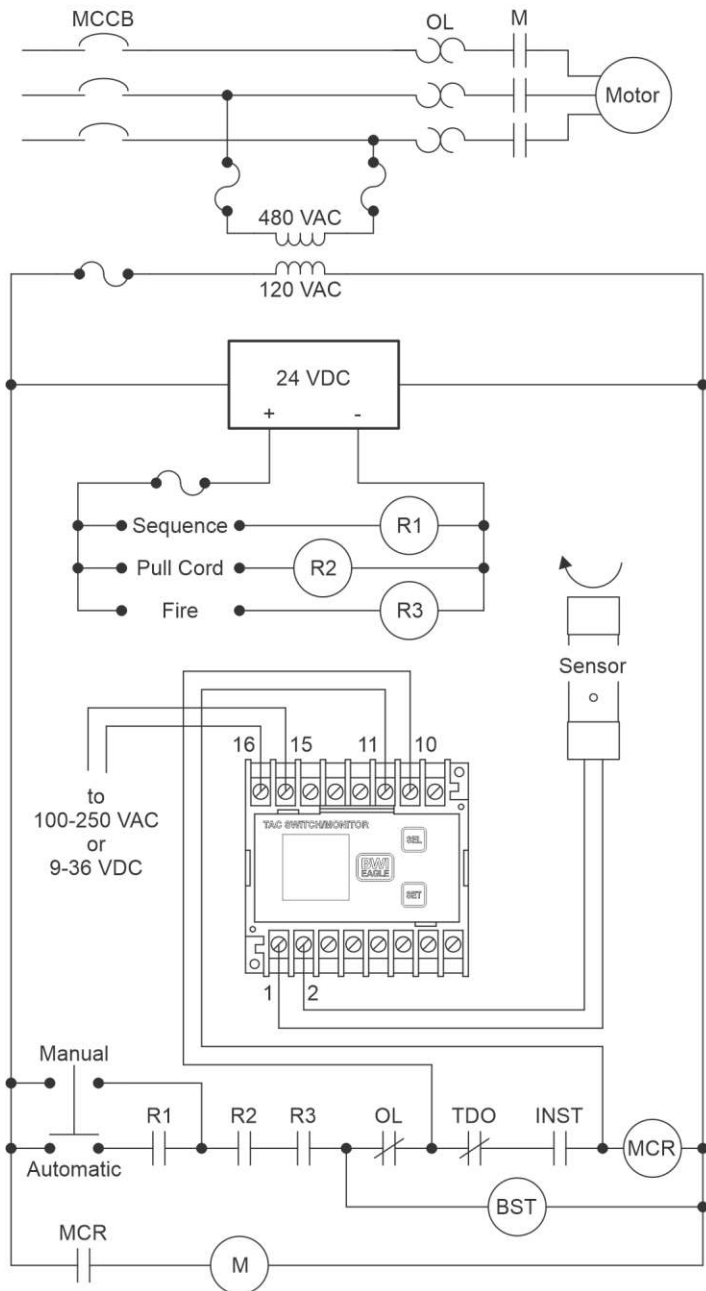
	221-8000-AC	221-8000-DC
Power Supply	100-250 VAC, 5 W, 50/60 Hz	9-36 VDC, 5W
Fuse Protected	1 amp	1 amp
Speed Range	6-3000 RPM	6-3000 RPM
Relay Contacts	DPDT 5 amp @ 120 VAC	DPDT 5 amp @ 120 VAC
Safety Delay	1 second	1 second
Response Time	1 second or less	1 second or less
Enclosure	Polycarbonate	Polycarbonate

## DIMENSIONS



## TYPICAL BELT STARTER WIRING DIAGRAM

RAMP-UP TIMER DISABLED (DEFAULT)



RAMP-UP TIMER ENABLED

